

INTRODUCTION

Violet Aluminium and UPVC Division, is one of the flagship division of Panorama Glass Factory which is founded in 2014. Violet Aluminium and UPVC established in 2018 and armed with years of successful operations. Management and Technical team hold the expertise of well experience in the field of aluminium and glass architecture and undoubtedly guarantees the best quality products and service to our customers.

It would give us great pleasure if you could visit our facility at your convenience or give us privilege to meet you for any further clarification. Please reassure that we endeavour to provide the best possible service we can offer at all times & look forward to have mutual business relationship with you in the near future. If you have any requirements our technical qualified staff and engineers shall be deputed to meet you to draw up exact specifications.

We are highly experienced in designing, engineering, fabrication and installation of varied range of architectural aluminium and glass products and services

PRODUCT RANGE

- Aluminium /UPVC Doors & Windows
- Structural Glazing & Curtain Wall works
- Aluminium Composite Panel works
- Frameless Glazing works
- Kitchen Cabinets
- SS Handrails
- Fire Rated Doors & Windows
- Automatic Sliding and Swing Doors
- Skylights and Domes

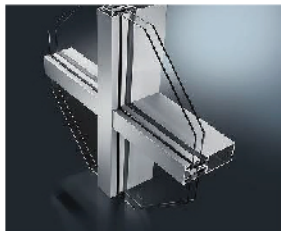
STRUCTURAL GLAZING CURTAIN WALLS



Violet Aluminium and UPVC Company have been offering all types of Structural Glazing, Curtain Wall, Stainless Steel and ACP works from high rise towers to commercial building, office complexes and shop fronts. We offer various types of aluminium systems with the strong tie ups from the leading brands.



SPECIAL ALUMINIUM SYSTEMS



Constructing large surfaces with aluminium and glass is a significant part of today's building industry. The requirements for curtain wall designing are accordingly high. Creative architects use aluminium to design objects demanding room for individuality. GUTMANN window, door, and curtain wall systems fulfill all requirements of modern architecture and feature innovative construction details. The thermally insulated aluminium profiles with their modern, narrow appearance offer custom solutions suitable for anything from residential buildings to object construction.

The program-wide profile compatibility including accessories and gaskets is only one of the advantages of the GUTMANN system series. Top performance during testing ensures consistent quality.



Established in 1960 Technal is a French company offering aluminium joinery solution such as: casements, doors, curtain walling, conservatories, pergolas, gates, balustrades...

Technal has demonstrated an unrivalled reputation for innovative and inspirational design solutions, technical excellence and built up an impressive portfolio of award-winning projects. Within the international community of architects and fabricators, Technal has gradually established itself as the point of reference for aluminium joinery.



Frameless Glass Partition



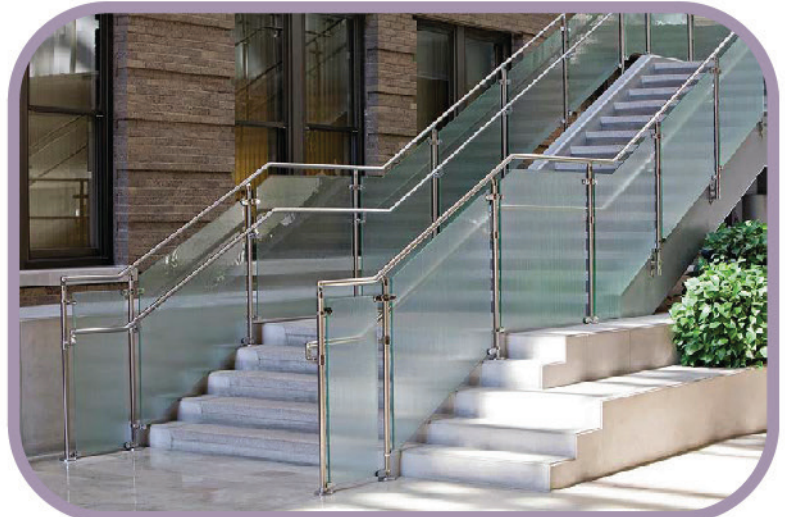
There are many styles and colours of partitions for you to choose from frosted to plain to coloured. They can be installed as per your personal preferences, be it facets, straight striking lines, or graceful curves.

The glass partitions are bonded together using virtually invisible joints or silicone joints to get the most seamless finish possible. Frameless glass partitions are fully demountable and include a wide variety of things and fixtures depending on the specific requirements such as door frames, direction heads, and reducer posts

Shower Partition



SS Handrails with Glass



Automatic Doors



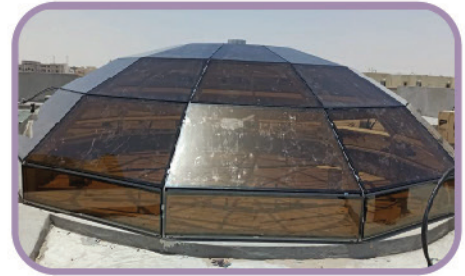
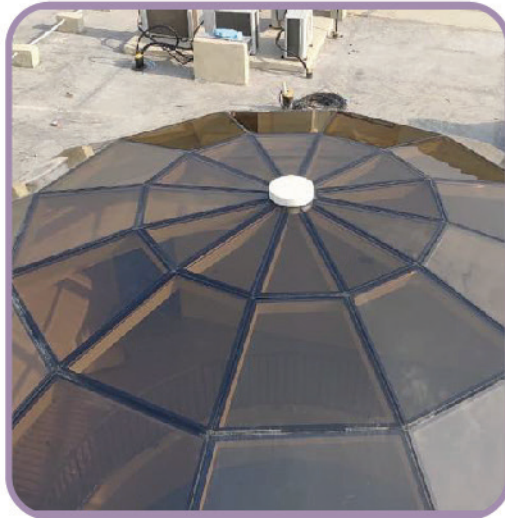
Violet Aluminium and UPVC Company offers Installation, commissioning and maintenance of all type for automatic doors according the customer's specific requirements in association with FAAC, Geze, Dorma .

Integrating with the latest technology we provide technical support, solutions, design and installation of glass wall systems to the increasing demand of the market.

- Automatic Sliding Doors
- Automatic Swing Doors
- Automatic Revolving Doors
- Automatic Folding Doors



Skylights and Domes



With the team of highly experienced Designers and technicians we provide creative designs and solutions to comply with the customer demands of skylights, conservatory, Canopies and domes

Kitchen Cabinet



Violet Aluminium and UPVC Company offers an array of kitchen wall units and base units in different style, colours and finishes. The different models and styles of cabinets are ideal for any kitchen



Quality | Integrity | Professionalism



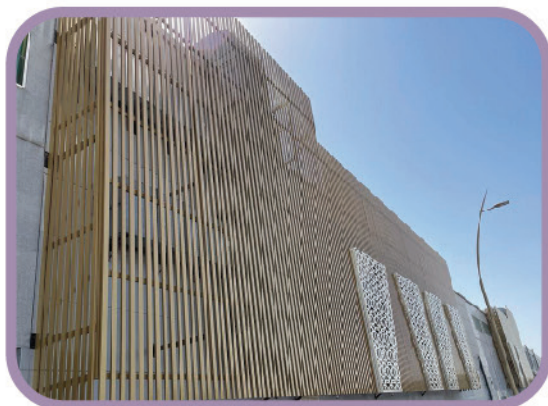
| | |
|------------------------|---|
| Project | : ABDULLA BIN KHALIFA STADIUM, AL DUHAIL |
| Main Contractor | : M/S. TAKYEEF ELECTROMECHANICAL |
| Scope of Work | : ALUMINIUM LOUVER, ALUMINIUM PERFORATED CLADDING AND STRUCTURAL STEEL |

Aluminium ACP Works



| | |
|------------------------|---|
| Project | : ABDULLA BIN KHALIFA STADIUM, AL DUHAIL |
| Main Contractor | : M/S. TAKYEEF ELECTROMECHANICAL |
| Scope of Work | : ALUMINIUM LOUVER, ALUMINIUM PERFORATED CLADDING AND STRUCTURAL STEEL |





| | |
|--------------------------|---|
| Project : | LULU HYPERMARKET@SALWA ROAD |
| Main Contractor : | M/S. LULU HYPERMARKET TRADING CO. |
| Scope of Work : | CURTAIN WALL, ALUMINIUM DECORATIVE MASHRABIYA, ALUMINIUM TUBES FOR FRONT AND BACK ELEVATION, ALUMINIUM CLADDING, ALUMINIUM AND UPVC WINDOWS & AUTOMATIC SLIDING DOOR |

Aluminium Doors & Windows



| | |
|--------------------------|---|
| Project : | G+5 Labour Accomodation |
| Main Contractor : | M/S. SAK TRADING & CONTRACTING CO. |
| Scope of Work : | Aluminium Windows and Doors |



Violet Aluminium and UPVC Company offers a wide range of Aluminium UPVC windows and doors. We have glazing options from most of the world's major glass suppliers. The Aluminium systems from Technal, Installux, Gulf Extrusion, Qatar Extrusion Constitutes company's core business. The range of classic doors and windows that Violet Aluminium & Glass Company offers has fewer parallels in the Qatar market. The various door and windows are the Followings:

- Hinged Windows and Doors
- Sliding Windows and Doors
- Tilt and Turn Windows
- Pivot Windows
- Top Hung Windows
- Louver Doors



| | |
|-------------------|------------------------------------|
| Project : | SHEIKHA MARRIAM VILLA@AL KHOR |
| Main Contractor : | M/S. SAK TRADING & CONTRACTING CO. |
| Scope of Work : | ALUMINIUM DOOR & WINDOWS |

Aluminium, Glass & Metal Works



| | |
|-------------------|---|
| Project : | OFFICE AND WORKSHOP FACILITIES AT WESTSIDE RAS LAFFAN INDUSTRIAL CITY |
| Main Contractor : | AL MUFTAH CONTRACTING CO W. L.L |
| Scope of Work : | ALUMINIUM, GLASS & METAL WORKS |

UPVC Windows & Doors Works



| | |
|------------------------|---|
| Project | : G+B+M+5+PH RESIDENTIAL BUILDING@MESAIMER |
| Main Contractor | : M/S. AL JAZIRA BUILDING AND CONTRACTING |
| Scope of Work | : UPVC DOORS, WONDOWS, ALUMINIUM MASHRABIYA & KITCHEN CABINETS |

UPVC Windows & Doors Works



| | |
|------------------------|--|
| Project | : Private Villa @ Garafa |
| Main Contractor | : TMC Trading & Contracting |
| Scope of Work | : Aluminium Fix Partition Works |



Quality | Integrity | Professionalism

Aluminium Doors & Windows



| | |
|------------------------|---|
| Project | : EZDAN CENTRAL PARK - I & II |
| Main Contractor | : M/S. SAK TRADING & CONTRACTING CO. |
| Scope of Work | : ALUMINIUM DOORS & WINDOWS |

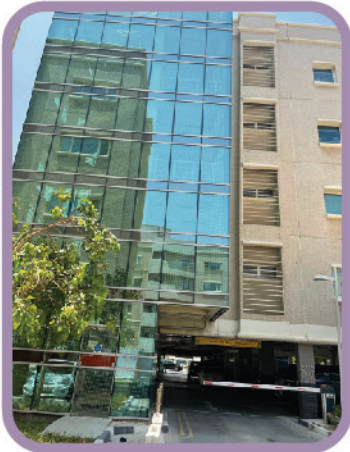
UPVC Windows & Doors Works



| | |
|------------------------|--|
| Project | : 14 RESIDENTIAL VILLA @ UMM SALAL ALI |
| Main Contractor | : M/S. AL JAZIRA BUILDING AND CONTRACTING |
| Scope of Work | : UPVC DOORS, WONDOWS |



Glazing Works

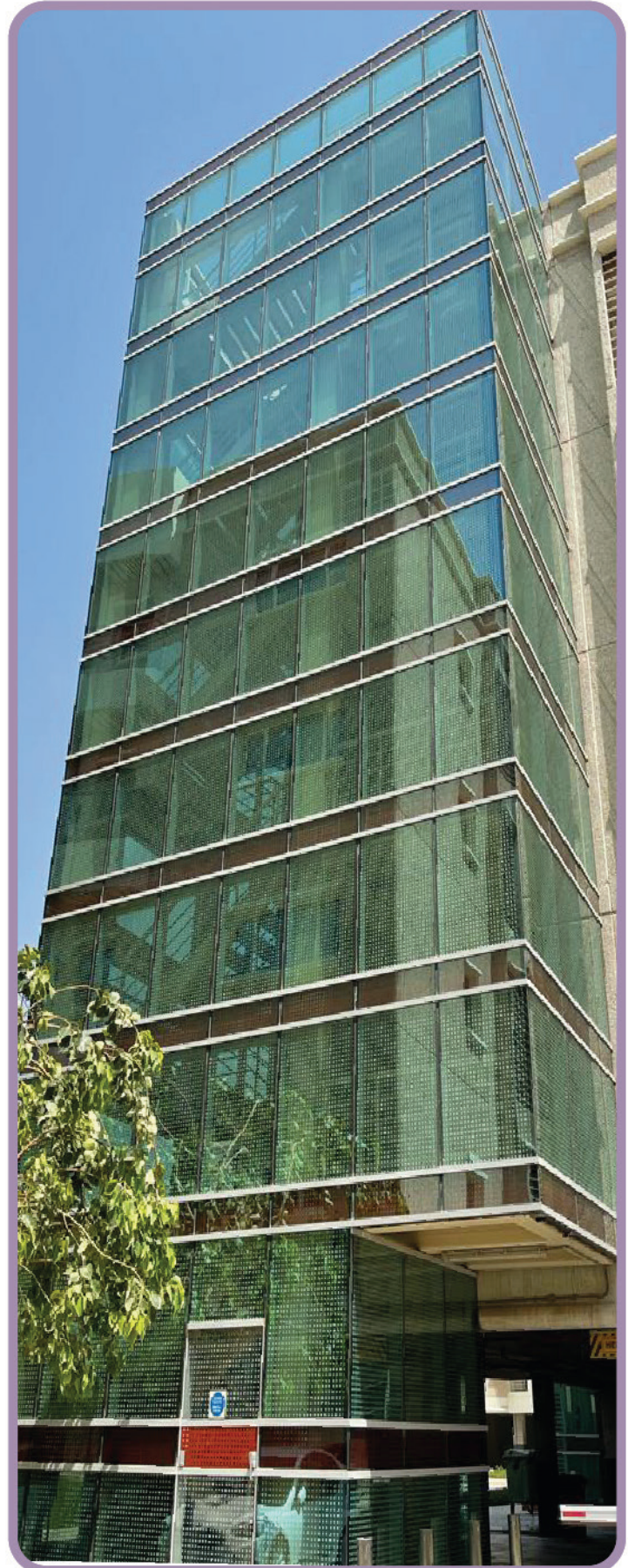


| | |
|--------------------------|--|
| Project : | HMC BUILDING 326@MEDICAL CITY |
| Main Contractor : | M/S. NEW CENTRE TRADING & ENGINEERING SERVICES |
| Scope of Work : | CURTAIN WALL, ALUMINIUM CLADDING, ALUMINIUM DOORS & WINDOWS |

Glazing Works



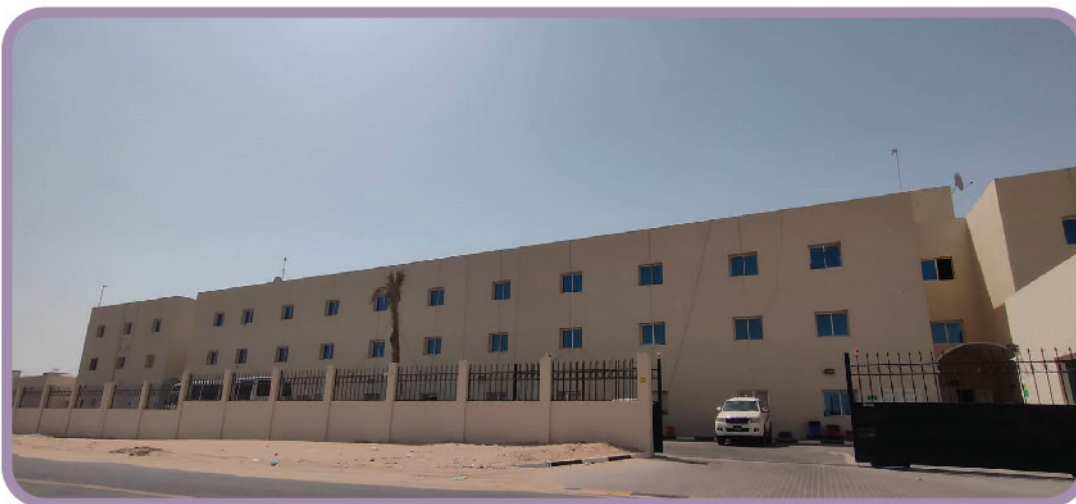
| | |
|--------------------------|--|
| Project : | HMC BUILDING 327@MEDICAL CITY |
| Main Contractor : | M/S. TADMUR TRADING W.L.L |
| Scope of Work : | CURTAIN WALL, ALUMINIUM CLADDING, ALUMINIUM DOORS & WINDOWS |





| | |
|------------------------|--|
| Project | : OFFICE BUILDING @ NEW INDUSTRIAL AREA |
| Main Contractor | : M/S. AL MASHY TRADING |
| Scope of Work | : ALUMINIUM CLADDING & WINDOWS |

Aluminium Doors & Windows



| | |
|------------------------|---|
| Project | : G+2 Labour Accomodation |
| Main Contractor | : Al Mufta Trading & Contracting |
| Scope of Work | : Aluminium Windows and Doors |

Glazing & ACP Works



| | |
|-------------------|--|
| Project : | SHOWROOM+WAREHOUSE@BIRKET AL AWAMER |
| Main Contractor : | M/S. AL MULLA ENGINEERING AND CONSTRUCTION |
| Scope of Work : | ALUMINIUM FIX & SLIDING WINDOWS |

Skylight



| | |
|-------------------|------------------------------------|
| Project : | Ezdan 20 & 35 |
| Main Contractor : | M/S. SAK TRADING & CONTRACTING CO. |
| Scope of Work : | Skylight |



Glazing & ACP Works



| | |
|------------------------|--|
| Project | : G+2 Office Building |
| Main Contractor | : Al Maha Trading & Contracting |
| Scope of Work | : Glazing, ACP, Works |

Glazing Partition & Automatic Works



| | |
|------------------------|--|
| Project | : Office Building |
| Main Contractor | : Lotus Trading & Contracting |
| Scope of Work | : Frameless Glass Works |



OUR PRODUCTION UNIT



Violet Aluminium and UPVC Company has a state of art production facility in the industrial area. Combined with the set of efficient machineries, highly dedicated and well trained work force with the practice of the quality control methodologies meeting the ISO standards has always ensured first class products and services to our clients.



Quality | Integrity | Professionalism

OUR PRODUCTION UNIT



Violet Aluminium and UPVC Company has a state of art production facility in the industrial area. Combined with the set of efficient machineries, highly dedicated and well trained work force with the practice of the quality control methodologies meeting the ISO standards has always ensured first class products and services to our clients.



Quality | Integrity | Professionalism

PRODUCT RANGE



AUTOMATIC SLIDING DOORS



AUTOMATIC SWING DOORS



AUTOMATIC REVOLVING DOORS



AUTOMATIC HERMATIC DOORS



AUTOMATIC TELESCOPIC DOORS



AUTOMATIC SWING GATE



AUTOMATIC GATE BARRIER



AUTOMATIC ROLLER SHUTTER



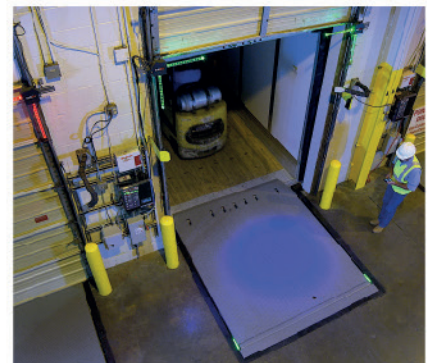
AUTOMATIC SECTIONAL DOORS



PARKING SAVER



BOLLARDS



DOCK LEVELER

QAUTOMATICS is a premium and service oriented company established for the Middle East Market.

Our Brands

We have carefully selected the products with superior aesthetic value and technical qualities to meet the highest standards worldwide. We only supply the renowned and highly specified brands from Europe & America

Our Products and Services

Automatic & Manual - Supply & Installation of Sectional doors, Rolling Shutters, High Speed Shutters, Folding door, Dock levelers, Garage doors, sliding doors, Revolving doors, Curved sliding doors, parking barrier etc.

Maintenance - We Undertake Maintenance & Repair of Sectional doors, Rolling Shutters, High Speed Shutters, Folding door, Dock levelers, Garage doors sliding doors, Revolving doors, Curved sliding doors, parking barrier etc.

Architectural Hardware - Wood & Steel door hardware, Aluminium Window and Door accessories, Glass hardware.

Our Team

We maintain a knowledgeable and responsive customer service team who can support in your projects. We also maintain an architectural consulting Group (ACG) Who is specialists to assist in your projects for Design, Preparation of specification, Hardware Schedule from floor plans and Master key systems, so as to ensure just in time delivery of materials. This service of our ACG is absolutely free of cost and no obligatory basis.

Our Focus

We only do project supplies. We cater to different types of projects,

Budget Projects: in which the budget is the priority and value for money is the prime consideration

Premium Projects: in which the priority is for its designs, styles and finishing.

penthouse projects: For very prestigious projects in which they require unique designs.

We are able to make our purchases from the vendors in a very high volume and also we make the flawless mode of payment. This helps us to get the best price and service which in turn is enjoyed by our clients

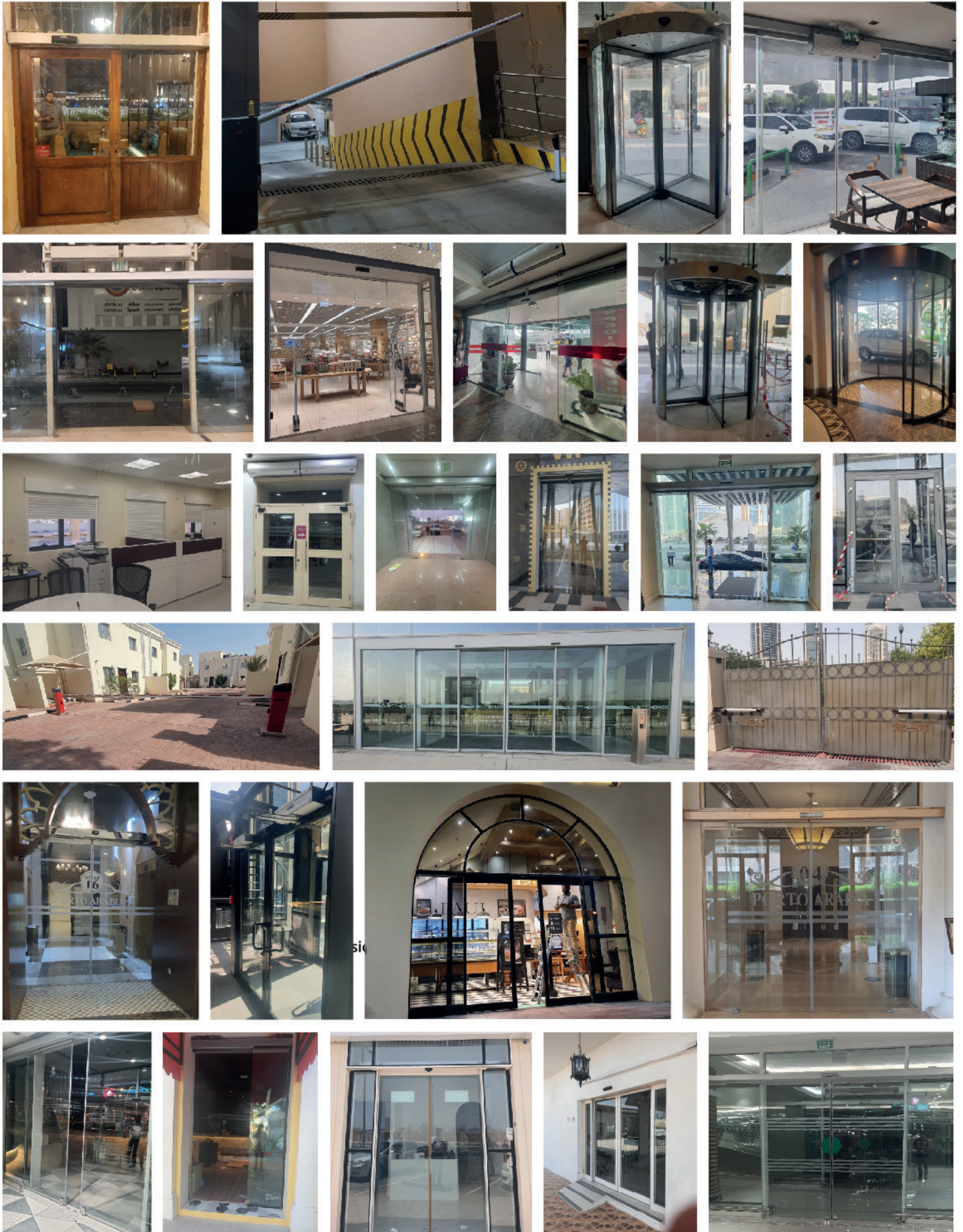
Our Assurance

We Look forward for maintaining and extending your. record of reliability, credibility and punctuality

We are ever responsive to support your requirements and as always, we appreciate your support.

OUR PROJECTS

QAUTOMATICS FOR DOORS
کیواتو ماتیक्स للأبواب



Quality | Integrity | Professionalism



PILKINGTON



PREVIOUS APPROVALS



dar ARIANE

Project Name: YASMEEN CITY - PK14
 Project Code: Q89025
 Consultant: Dar Al Handasah
 Submittal No.: Q80025-D-PQ-ARC-170-0012
 To: M/S Dar Al Handasah

Submission Date: 24-May-21
 Rev No.: 0
 No Of Copies: 15C

Pre-qualification for Sub-Contractor

3. Sub-Contractor's particulars
 Company Name: VIOLET ALUMINIUM AND UPVC

Qatar Armed Forces
 Qatar Emiri Corps of Engineers
 P.O. Box: 9578 / 5735
 DOHA - QATAR
 Tel : 44612780 / 44612711
 Fax : 44605300 / 44612811

FAX MESSAGE

Msg. No. QCE/FAKX/210-102-01/221 4-5-6
 Fax To M/S. BAHADIR Construction Engineering
 Attention The Manager
 Sub: New Camp at Qatar Emiri Signal Corps - Design and Build (Q-102-01)
 Vendor Approval: M/s Violet Aluminium & UPVC Co. for Sub-Contractor for Supply and Installation of Panoramic lift glass cladding

Date: 25/10/2022
 Fax No. 44651683
 No. of Pages

BAHADIR CONSTRUCTION

PROJECT: QESC-New Camp Project- Design & Build
 CONTRACTOR: Bahadir Construction Engineering Contracting and Trading Inc. Co.
 SUBCONTRACTOR: Violet Aluminium & UPVC Co.
 SUBMITTAL REF: SSC-BAH-0001-DSS-AR-02484

PROJECT REF: Q-102-01
 CLIENT: QATAR ARMED FORCES (QAF) / QCEC- WING-2
 CONSULTANT: Engineering Adnan Sattari (EAS)

NEW SUBMISSION ☐ RE-SUBMISSION ☐

QATAR EMIRI CORPS OF ENGINEERS
 ADDITIONAL FLOOR FOR HQ BUILDING FOR ORGANIZATION AND DEVELOPMENT DIRECTORATE AT SAILYAH CAMP

PROJECT: Q-102-01
 CLIENT: QATAR ARMED FORCES (QAF) / QCEC- WING-2
 CONSULTANT: Engineering Adnan Sattari (EAS)

NEW SUBMISSION ☐ RE-SUBMISSION ☐

QATAR ARMED FORCES
 QATAR EMIRI CORPS OF ENGINEERS
 QCEC WING-2

PROJECT: ADDITIONAL FLOOR FOR HQ BUILDING FOR ORGANIZATION AND DEVELOPMENT DIRECTORATE AT SAILYAH CAMP
 CAMP: SAILYAH CAMP
 SUPERVISION WING: WING 2
 REF NO: HQ-PQ-C-18

PRE QUALIFICATION SUBMITTAL

EXTERNAL TRANSMITTAL
 OPERATIONS ENGINEERING, DUKHAN

Project No: Q-102-01
 Client: QATAR ARMED FORCES (QAF) / QCEC- WING-2
 Consultant: Engineering Adnan Sattari (EAS)

NEW SUBMISSION ☐ RE-SUBMISSION ☐

Sabhat Engineering Consultancy
 Architectural - Structural - Electro mechanical & Project Management

DOCUMENT TRANSMITTAL

Main Contractor: MACKINS TRADING & CONTRACTING W.L.L.
 Sub-Contractor: Violet Aluminium & UPVC CO
 The name of Organization: Sabhat Engineering Consultancy
 New Industrial Area, Street no-26, Building no-30
 Area no-51

To whom it may concern

This is to acknowledge that VIOLET ALUMINIUM AND UPVC has worked as a subcontractor under Blueprint for SDCRA hospital VVP project.

During this project VIOLET ALUMINIUM AND UPVC installed 12 nos of FRACAS 3000 automatic sliding operation in SDCRA VVP area.

They mentioned to complete the work with immediate prioritization and to complete the work before the deadline.

DOCUMENT TRANSMITTAL

Project Name: AL AMIRI CONCRETE FACTORY
 Project No: Q-102-01
 Consultant: Dar Al Handasah
 Submittal No.: Q80025-D-PQ-ARC-170-0012

MR. NADIR BADRUDDIN

PROJECT: P103 - Fox Hills Residential Bldgs.
 (P11, L12, L13, L15, P13, P14)

CONTRACTOR: CHASA
 CONSULTANT: erga

MATERIAL APPROVAL REQUEST

REGULATION DOCUMENT

Project Name: AL AMIRI CONCRETE FACTORY
 Project No: Q-102-01
 Consultant: Dar Al Handasah
 Submittal No.: Q80025-D-PQ-ARC-170-0012

MATERIAL SUBMITTAL

Project Name: AL AMIRI CONCRETE FACTORY
 Project No: Q-102-01
 Consultant: Dar Al Handasah
 Submittal No.: Q80025-D-PQ-ARC-170-0012

AL MUFTAH CONTRACTING COMPANY W.L.L.
 P.O. Box 9578, Doha - Qatar

DOCUMENT TRANSMITTAL

Project Name: AL AMIRI CONCRETE FACTORY
 Project No: Q-102-01
 Consultant: Dar Al Handasah
 Submittal No.: Q80025-D-PQ-ARC-170-0012

MATERIAL SUBMITTAL

Project Name: AL AMIRI CONCRETE FACTORY
 Project No: Q-102-01
 Consultant: Dar Al Handasah
 Submittal No.: Q80025-D-PQ-ARC-170-0012

SUBMITTAL FOR APPROVAL MATERIAL

Project Name: AL AMIRI CONCRETE FACTORY
 Project No: Q-102-01
 Consultant: Dar Al Handasah
 Submittal No.: Q80025-D-PQ-ARC-170-0012

LuLu

Project Name: AL AMIRI CONCRETE FACTORY
 Project No: Q-102-01
 Consultant: Dar Al Handasah
 Submittal No.: Q80025-D-PQ-ARC-170-0012



Quality | Integrity | Professionalism

QUALITY POLICY



Violet Aluminium and UPVC Company is committed to render the best services to our customers since 2014. We have a long tradition of delighting our customers which is accomplished through the following practices:

- Understanding the customer requirements and specifications
- Practising Safety and Quality management
- Procurement of the best quality products in the market
- Reliable and Timely services
- Optimal utilization of resources and ensuring safety at all stages



This is an accredited certificate and is subject to the rules of Accreditation Services for Certifying Bodies (ASCB) Limited who have assessed QRS (UK) as a Certifying Body for compliance with ISO 17021:2015 Conformity Assessment - Requirements for bodies providing audit and certification of management systems. This certificate is only valid when endorsed by the register listed in the QRS Ltd (qrs-uk.com).



This is an accredited certificate and is subject to the rules of Accreditation Services for Certifying Bodies (ASCB) Limited who have assessed QRS (UK) as a Certifying Body for compliance with ISO 17021:2015 Conformity Assessment - Requirements for bodies providing audit and certification of management systems. This certificate is only valid when endorsed by the register listed in the QRS Ltd (qrs-uk.com).



This is an accredited certificate and is subject to the rules of Accreditation Services for Certifying Bodies (ASCB) Limited who have assessed QRS (UK) as a Certifying Body for compliance with ISO 17021:2015 Conformity Assessment - Requirements for bodies providing audit and certification of management systems. This certificate is only valid when endorsed by the register listed in the QRS Ltd (qrs-uk.com).






VIOLET
ALUMINIUM AND UPVC
Division of Panorama Glass

P.O. Box : 40022, Street 26, Building 30, Area No 81
New Industrial Area Doha - Qatar.
Tel : +974 4447 5854
Fax : +974 4437 3207, C.R.No : 107943
E-mail : info@violetaluminium.com
Website : www.violetaluminium.com